

# AMS 7: Lecture 2

Visualize Data and Central Tendency

April 6, 2017

## Introduction

Announcements

Daily Quote

## Notes

Statistics

Frequency

Plotting Data

Central Tendency

# Class Updates



## Introduction

Announcements

Daily Quote

## Notes

Statistics

Frequency

Plotting Data

Central Tendency

*"I start in the middle of a sentence and move both directions at once."*  
John Coltrane

## Introduction

Announcements

Daily Quote

## Notes

**Statistics**

Frequency

Plotting Data

Central Tendency

Important Distinction:

1. **Descriptive Statistics:**
2. **Inferential Statistics:**

## Introduction

Announcements

Daily Quote

## Notes

Statistics

**Frequency**

Plotting Data

Central Tendency



Occurrences of an Event

1. **Frequency:**
2. **Frequency Distribution:**

## Reasons Why we create a Frequency Distribution

1. Summarize Large Data Sets
2. See Distribution of data and outliers
3. Used for plotting Data

# Example

Frequency distribution of cotinine (a metabolite of nicotine) level of smokers. A sample of 40 smokers and their cotinine level) in ng/ml (1st edition)

1	0	131	173	265	210	44	277	32	3
35	112	477	289	227	103	222	149	313	491
130	234	164	198	17	253	87	121	266	290
120	167	250	245	48	86	284	1	208	173

Procedure For Frequency Distribution

## Introduction

Announcements

Daily Quote

## Notes

Statistics

Frequency

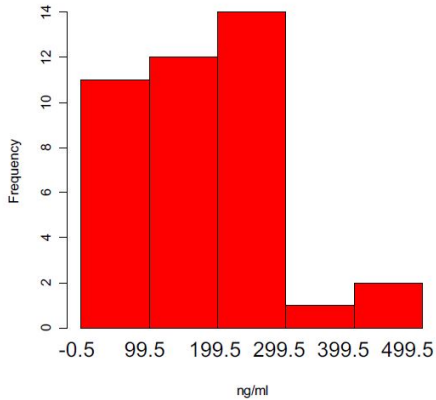
**Plotting Data**

Central Tendency

## Viewing Data:

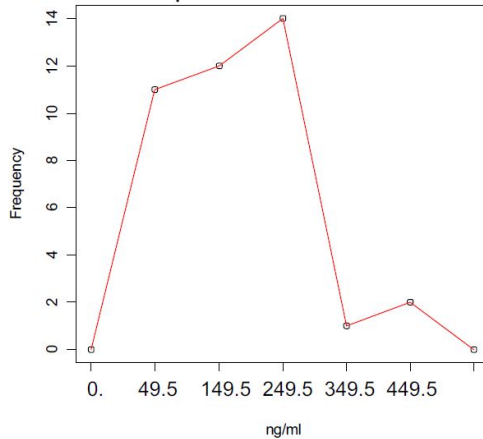
1. Histograms
2. Frequency Polygons
3. Bar Plots or Bar Graphs
4. Pareto Charts
5. Scatter Plots
6. Time Serie Plots
7. Others: Dot Plots, Stem-and-Leaf Plots, and Pie Charts

# Histogram



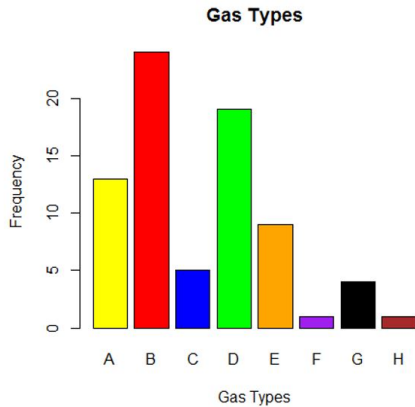
;

# Frequency Polygon

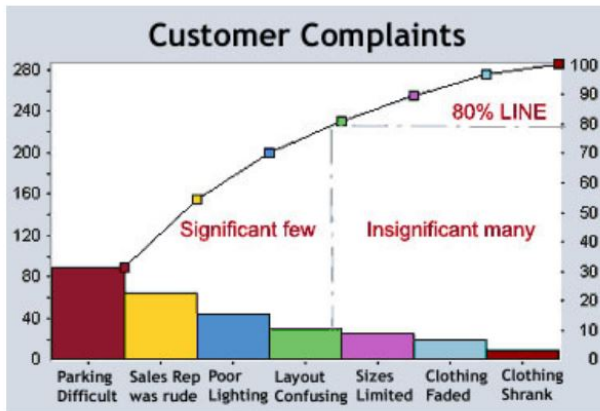


;



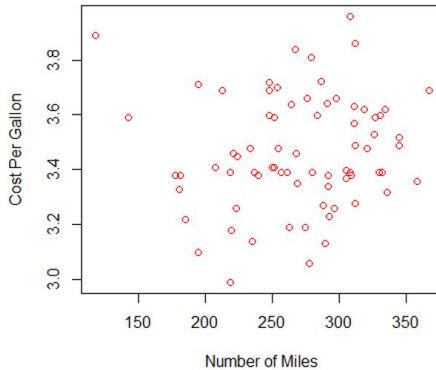


;



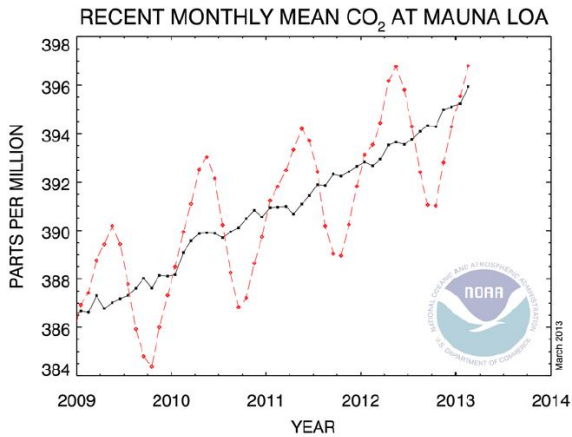
;

**Cost vs. # of Miles**



;

# Time Series Plot



;

## Introduction

Announcements

Daily Quote

## Notes

Statistics

Frequency

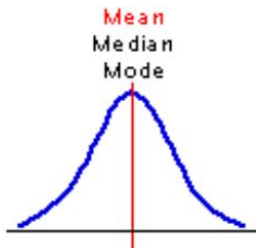
Plotting Data

Central Tendency

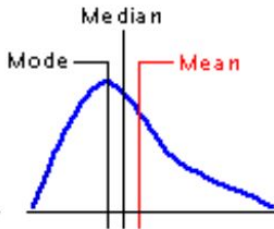
Central Tendency:

1. Mean
2. Median
3. Mode
4. Midrange
5. Weighted Mean

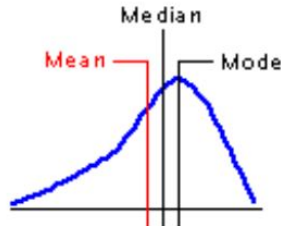
## Skewness



**Symmetrical  
Distribution**



**Positive  
Skew**



**Negative  
Skew**